

WALL TYPES

- 1 EXISTING 5/8" FIRERATED GYP. BD. EACH SIDE OF 3-5/8" MTL. STUDS @ 16" O.C. TO STRUCTURE ABOVE. BUILT IN ACCORDANCE W/ U.L. #465 BY LANDLORD
- 2 EXISTING 5/8" GYP. BD. EACH SIDE OF 3-5/8" MTL. STUDS @ 16" O.C. TO 6" ABOVE CEILING. CROSS BRACE TO STRUCTURE ABOVE @ 4'-0" O.C. BY LANDLORD
- 3 EXISTING BASE BUILDING EXTERIOR WALL. FURR OUT WALL WITH 5/8" TYPE "X" GYP. BD. AND INSULATE WITH 3/4" RIGID FOAM BY LANDLORD
- 4 EXISTING TENANT DEMISING WALL. BY LANDLORD
- 5 5/8" GYP. BD. EACH SIDE OF 3-5/8" MTL. STUDS @ 16" O.C. TO 6" ABOVE CEILING. CROSS BRACE TO STRUCTURE ABOVE @ 4'-0" O.C. BY TENANT CONTRACTOR SEE SECTION #1 ON DWG. A-6
- 6 5/8" FIRERATED GYP. BD. EACH SIDE OF 3-5/8" MTL. STUDS @ 16" O.C. TO STRUCTURE ABOVE. BUILT IN ACCORDANCE W/ U.L. #465 BY TENANT CONTRACTOR

NOTES

- HATCH PATTERN DENOTES NEW G.W.B. CONSTRUCTION BY TENANT CONTRACTOR
- ALL PLUMBING IS BY LANDLORD.
- REAR EXIT DOORS, ENTRY DOORS, TOILET ROOM DOORS AND STOCKROOM DOORS ARE BY LANDLORD.
- REFER TO DRAWING HDCP-1 FOR ADA REQUIREMENTS ON SALES DESK, FITTING ROOMS, HANDICAP FITTING ROOMS, DOORS, THRESHOLDS, ETC.

STANDARD LENGTHS
 20' x 10'-0" SHELF
 24' x 10'-0" COUNTER

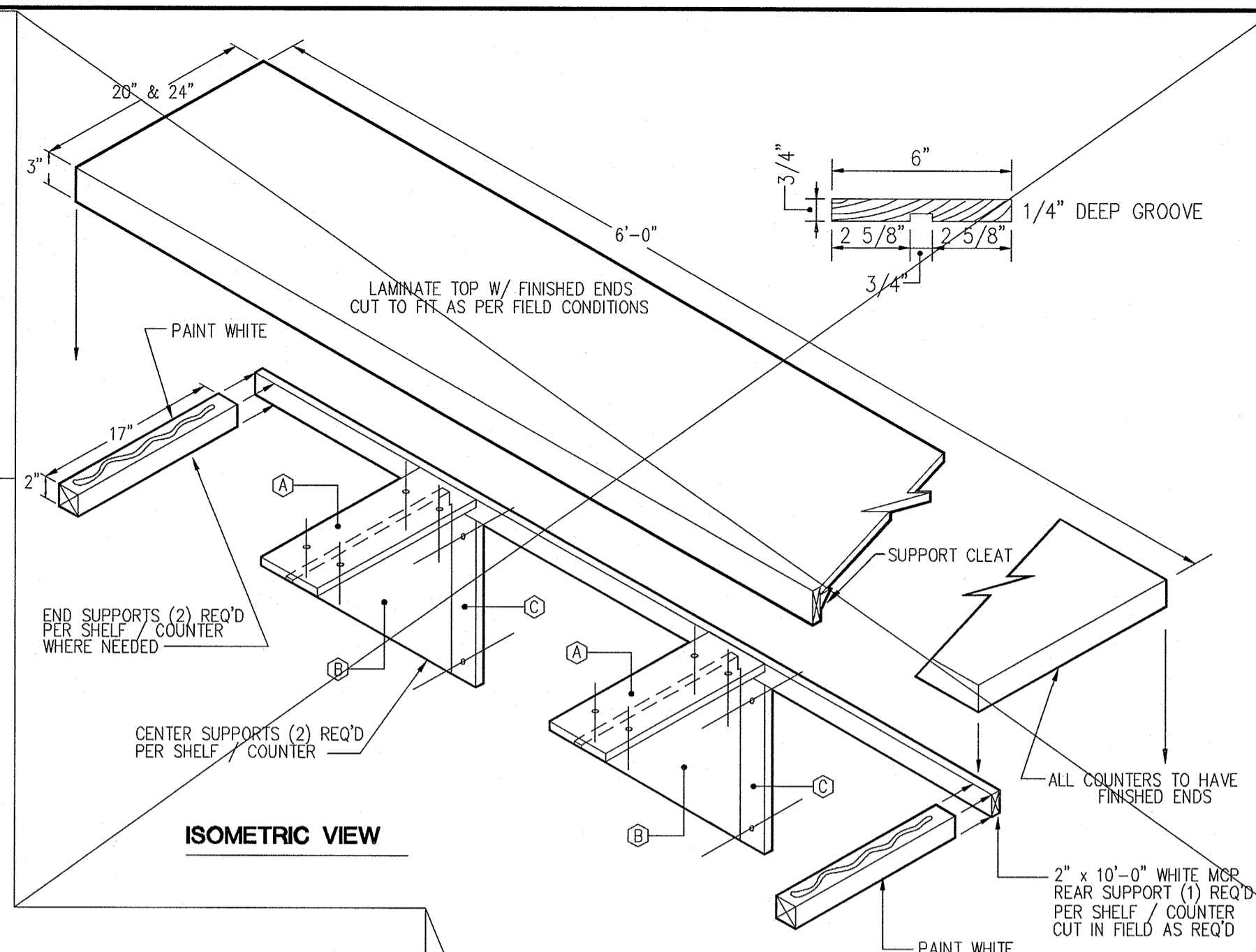
CENTER SUPPORTS
 SHELF SUPPORTS (2) REQ'D
 COUNTER SUPPORTS (2) REQ'D

CENTER SUPPORTS CONSIST OF A, B & C

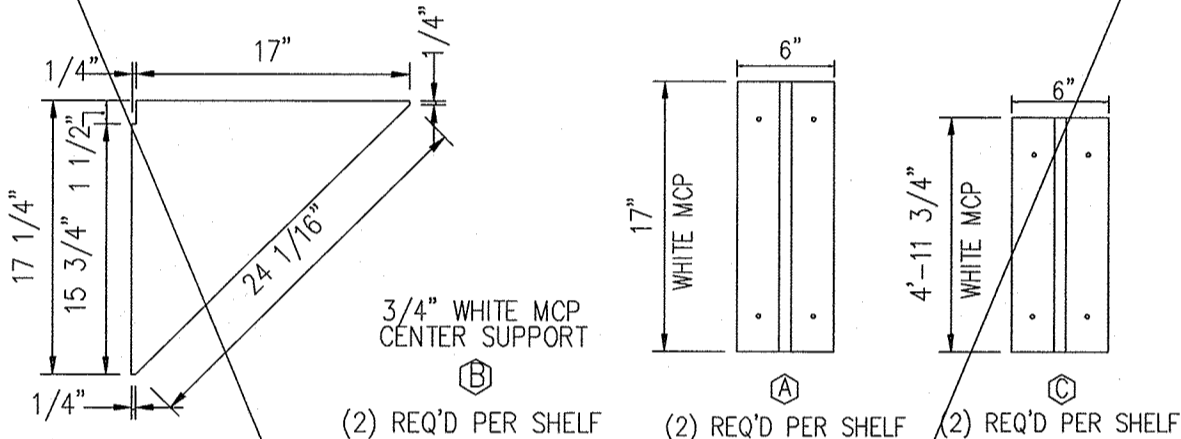
END SUPPORTS
 (2) REQ'D PER SHELF
 (2) REQ'D PER COUNTER

ONE WALL LOUNGE CONDITIONS REQUIRE
 (1) END SUPPORT PER SHELF & COUNTER

REAR SUPPORTS
 (1) REQ'D PER SHELF
 (1) REQ'D PER COUNTER

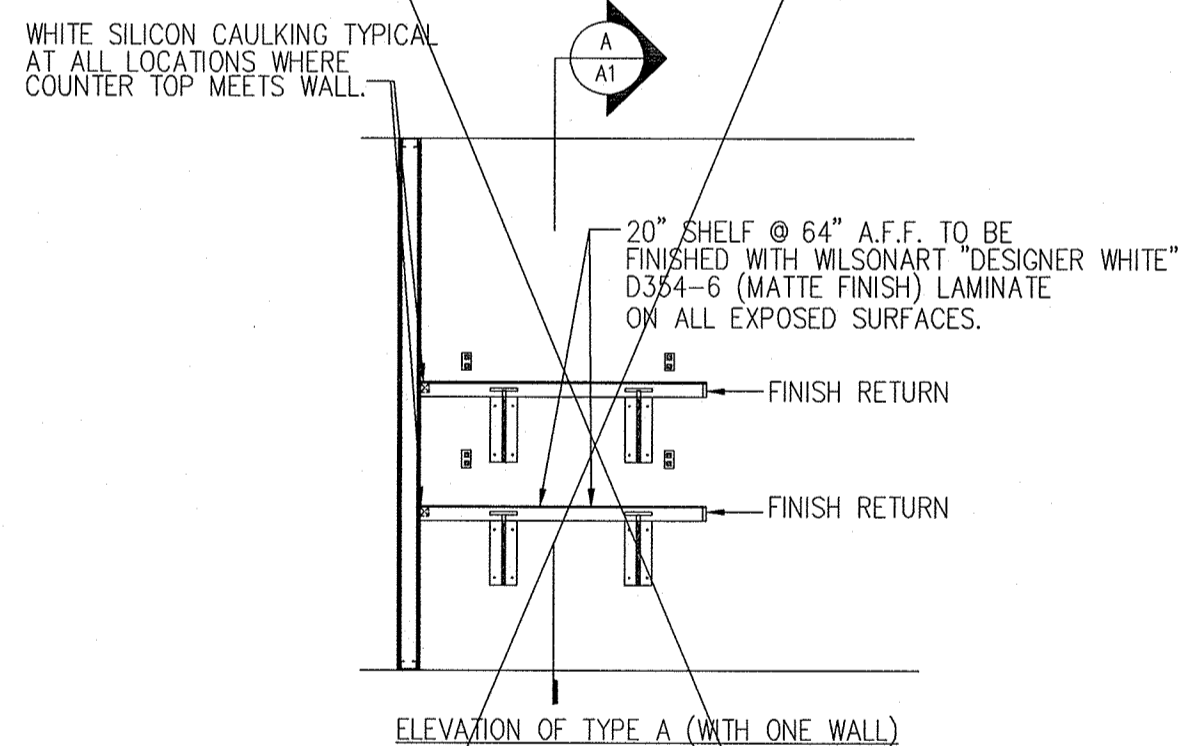


ISOMETRIC VIEW



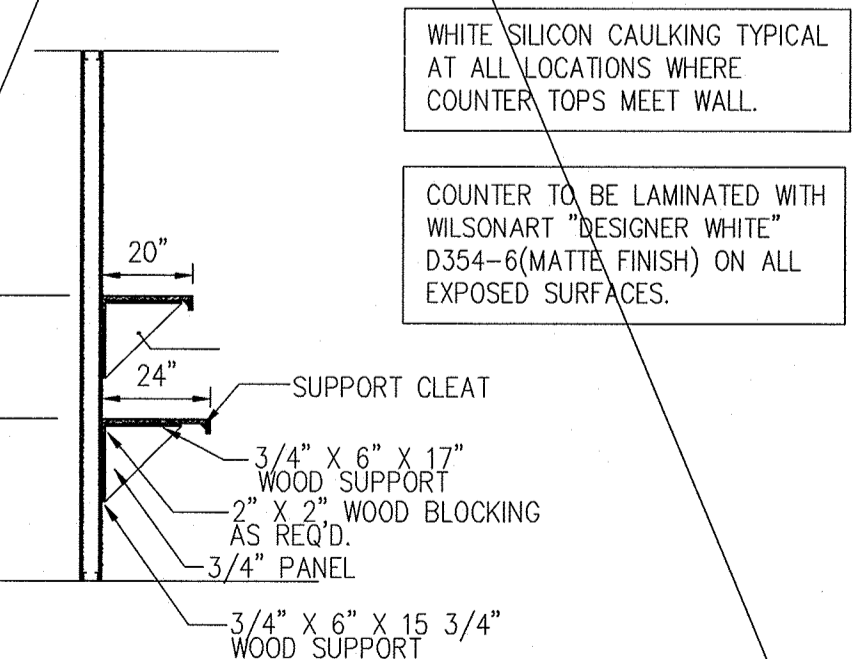
CENTER SUPPORT DETAILS

SCALE: N.T.S.



DETAIL @ LOUNGE COUNTER

SCALE: 1/4"=1'-0"

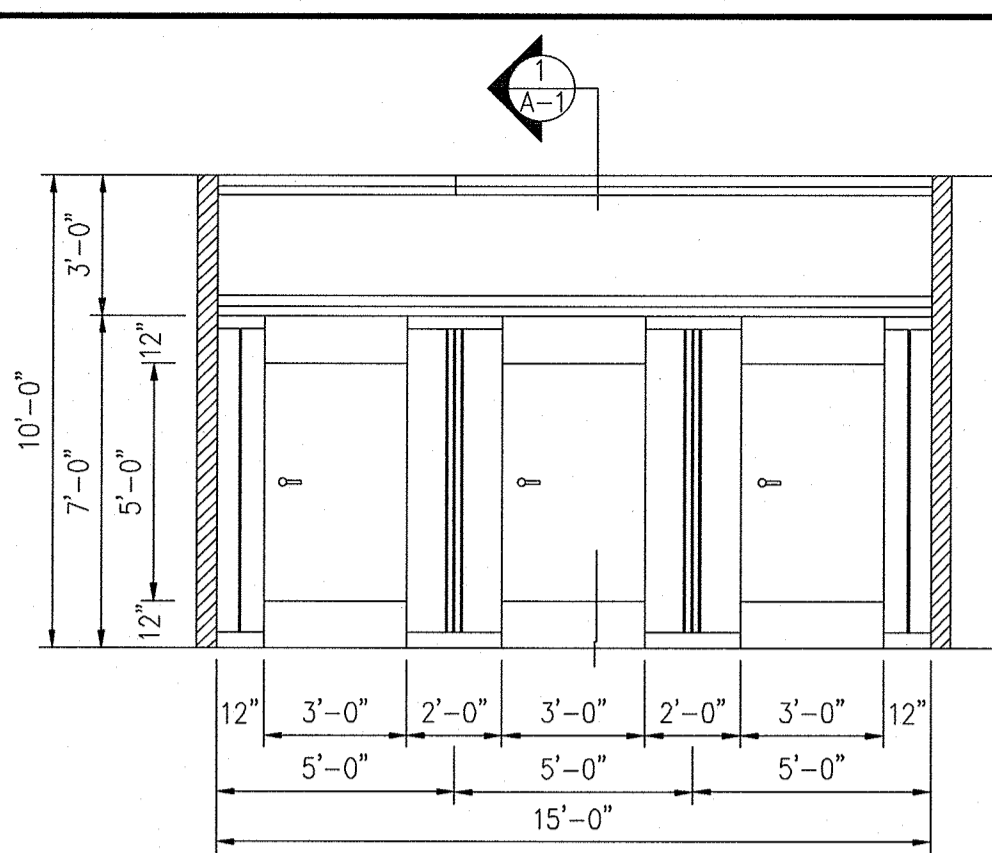


SECTION @ LOUNGE COUNTER

SCALE: 1/4"=1'-0"

LOUNGE DETAILS

NOTE: NO LOUNGE SHELF IN THIS STORE

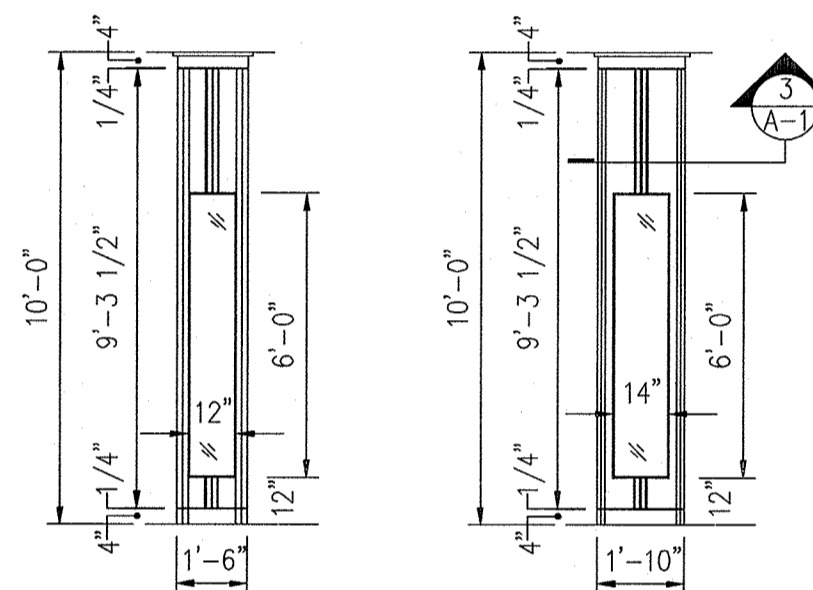


ELEVATION

SCALE: 1/4"=1'-0"

FITTING ROOM DOOR HANDLE:
 ANSI APPROVED KEY IN LEVER ENTRY
 W/ DULL CHROME FINISH. "ULTRA HARDWARE"
 #6610X26 O.K.A. (OR EQUAL)
 HARDWARE INSTALLATION TO CONFORM TO
 ANSI 156.2

FITTING ROOM DETAILS

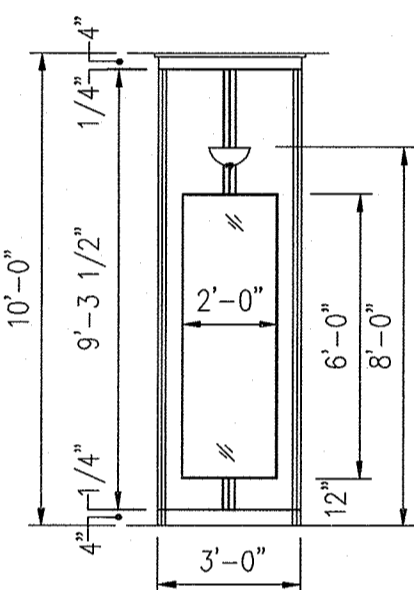


DETAIL A

MILLWORK WALL COLUMN
 SCALE: 1/4"=1'-0"

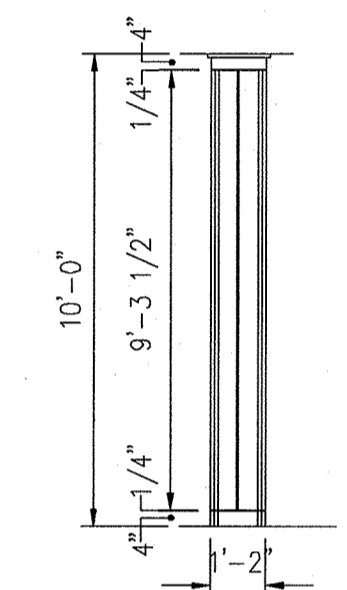
DETAIL D

MILLWORK COLUMN ENCLOSURE
 SCALE: 1/4"=1'-0"



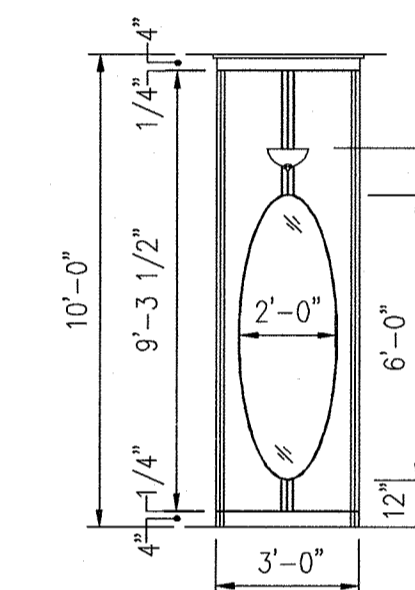
DETAIL F

MILLWORK WALL COLUMN
 SCALE: 1/4"=1'-0"



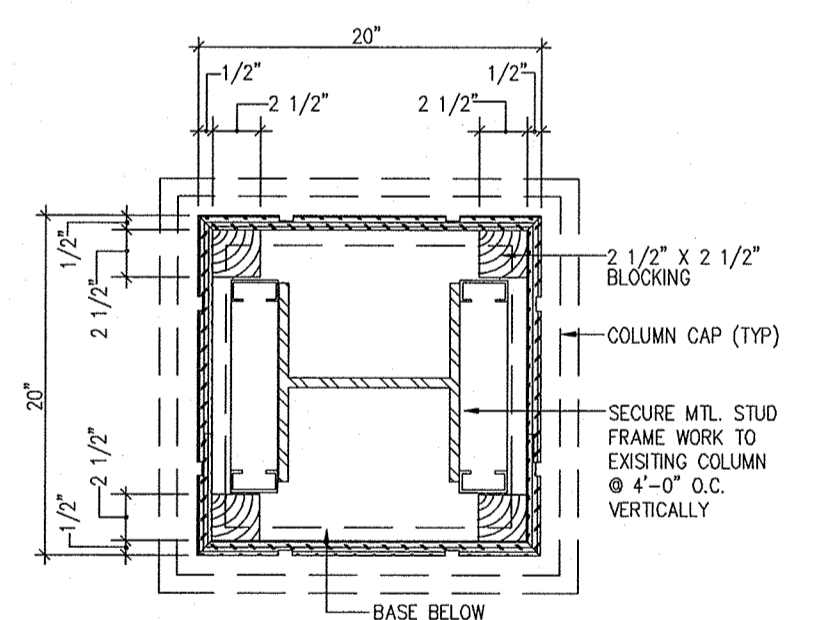
DETAIL K

MILLWORK COLUMN ENCLOSURE
 SCALE: 1/4"=1'-0"



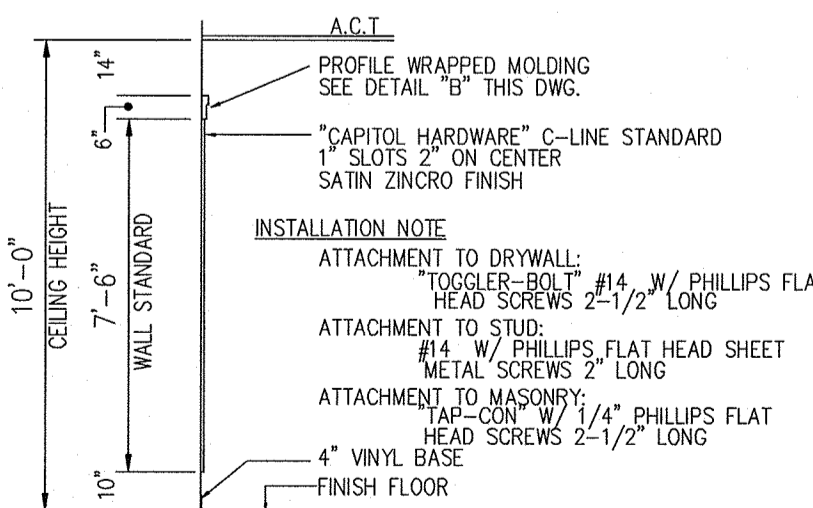
DETAIL H

MILLWORK WALL COLUMN
 SCALE: 1/4"=1'-0"



SECTION #3

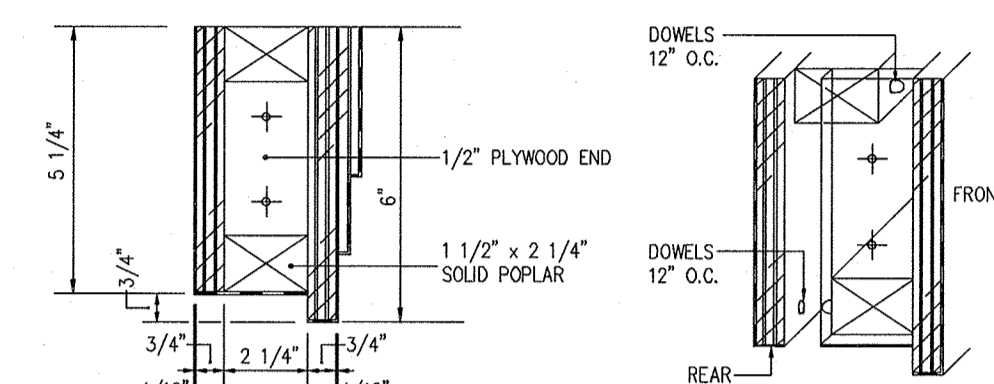
SCALE: N.T.S.



SECTION #4

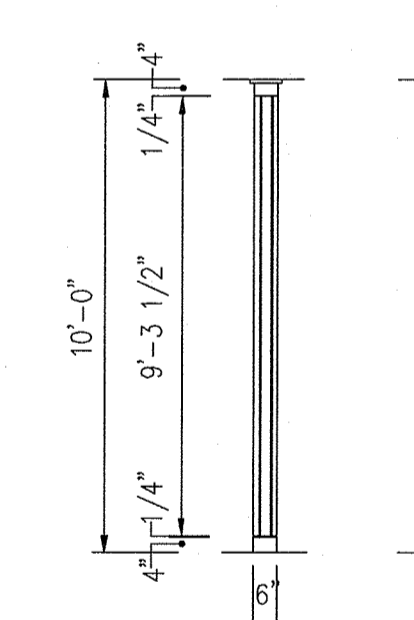
SCALE: 1/4"=1'-0"

MILLWORK DETAILS



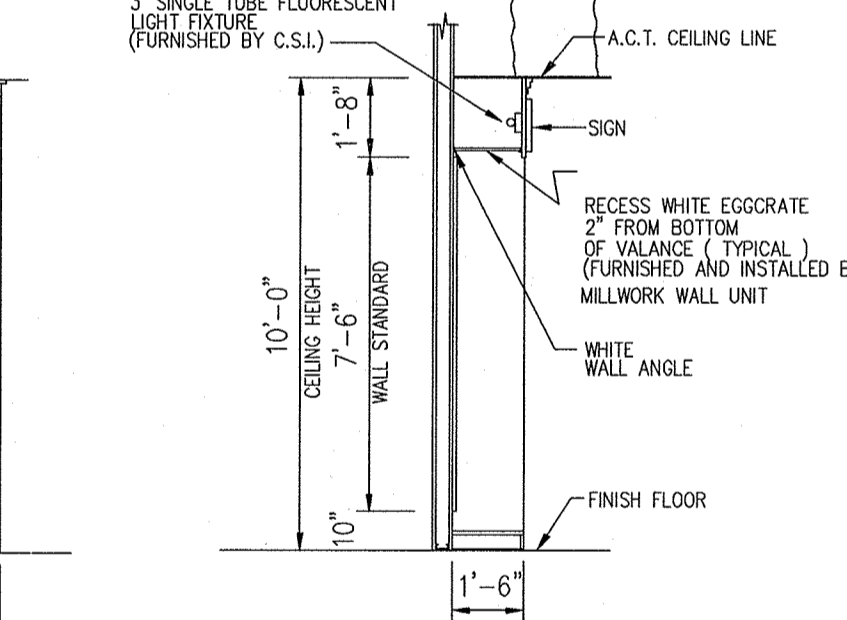
DETAIL AA

SCALE: 1/4"=1'-0"



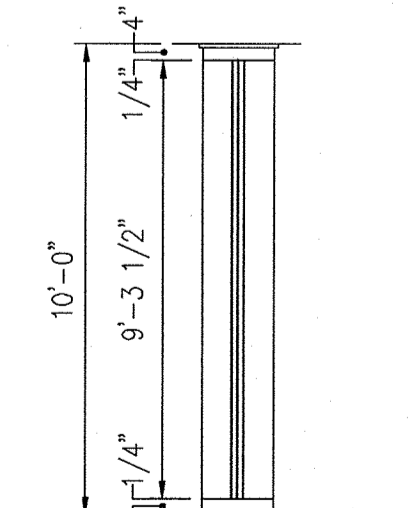
DETAIL B

6" MILLWORK PARTITION
 SCALE: 1/4"=1'-0"



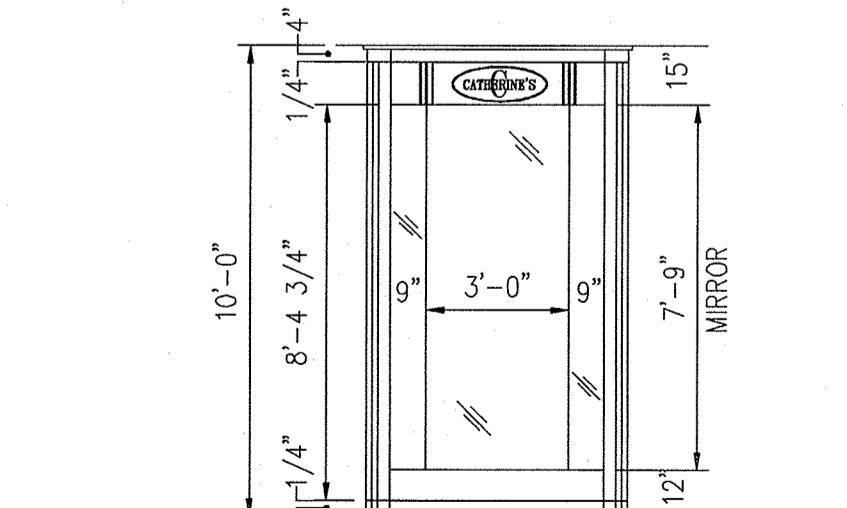
DETAIL #5

SECTION OF MILLWORK WALL UNIT
 SCALE: 1/4"=1'-0"



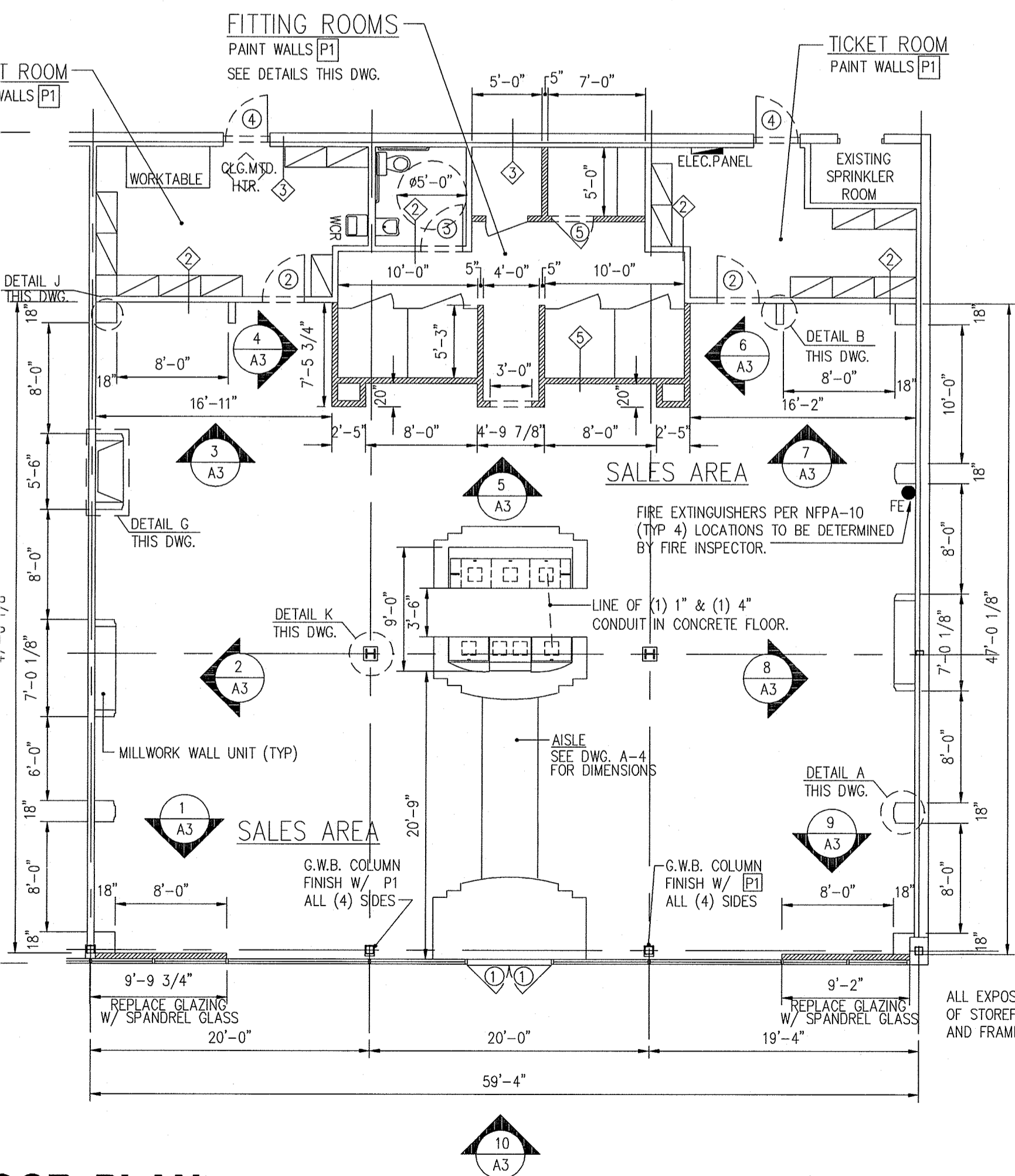
DETAIL J

MILLWORK CORNER WALL COLUMN
 SCALE: 1/4"=1'-0"



DETAIL G

MILLWORK 3-WAY MIRROR
 SCALE: 1/4"=1'-0"



DOOR PLAN

1/8"=1'-0"

Catherine's
 CHARMING SHOPPES, INC
 MIKAEL KANE AIA-NCARB
 450 WINKS LANE
 BENSALAM, PA 19020 215-245-9100 EXT. 6663

NO.	DATE	REVISION DESCRIPTION	BY	SCALE

STORE NO. 5242	DATE 5/15/00	SCALE 1/8"=1'-0"	DRAWN BY JFT	CHECKED BY
----------------	--------------	------------------	--------------	------------

PROJECT TITLE **CATHERINE'S**
 ROUTE 248 & HWY. 33 EASTON, PA.
 NORTHAMPTON CROSSINGS

SHEET TITLE **FLOOR PLAN**

SHEET NO. **A-1**